

# Track record



**Parnell/Auckland** 10 Scarborough Terrace

3 1 2

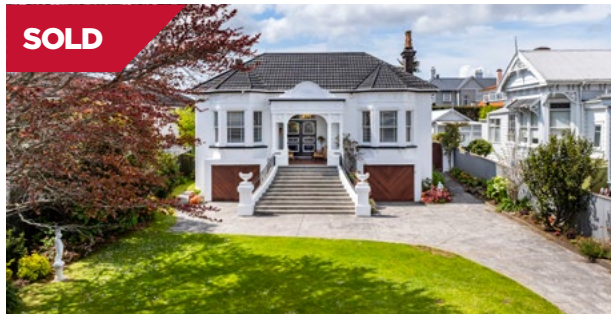
Tranquil Scarborough Reserve provides the calm green outlook and adds an x-factor to this charming 1910s villa. Situated just metres to the delights of Parnell Rd's restaurants and cafes, this is a special city-side lifestyle.



**Mount Eden/Auckland** 18 Burnley Terrace

3 2 1 1 2 516<sub>sqm</sub>

This cherished, charming single bay villa, nestled in one of Mt Eden's most beloved and sought-after heritage streets, is available for the first time in 30 years.



**Mount Eden/Auckland** 586 Mount Eden Road

4 2 2 2 4 916<sub>sqm</sub>

Set proudly elevated to the road, 'Langhorne Residence' is a magnificent piece of Mt Eden history, originally owned by Henry Clayton Brewer, Registrar of the Supreme Court.



**Royal Oak/Auckland** 7/861 Manukau Road

2 1 1 1

This freehold, immaculately presented brick unit is a perfect find for those seeking a warm, sunny, secure, private retreat. Located in a quiet enclave, it offers a peaceful neighborhood feel.



**One Tree Hill/Auckland** 7A Ewenson Avenue

3 1 1 2 1

Located in sought after Ellerslie School and Remuera Intermediate Zones this warm, light-filled home offers a spacious, open-plan living and dining area that opens to a private deck, patio and a generous garden.



**Epsom/Auckland** 185 St Andrews Road

5 2 2 1 2 1497<sub>sqm</sub>

This grand, 1920s, Arts and Crafts home exudes timeless elegance. Set at the end of a tree-lined drive, it offers a sense of arrival in a prestigious, elevated position along the ridge-line, within mature grounds.

# Track record



**SOLD**

**Mount Eden/Auckland** 3 Balmer Lane

3 2 1 1

Homes in this tightly held Paddington Green enclave are always sought after. No wonder, given the permanent construction, central location and great school zonings.



**SOLD**

**Mount Eden/Auckland** 118 Shackleton Road

5 2 3 2 360<sub>sqm</sub>

Sitting proud in an elevated position this character bungalow, bathed in all day sun and adorned with leadlights, high stud ceilings and polished floors, has a classic yet fresh ambiance.



**SOLD**

**Mount Eden/Auckland** 11 Balmer Lane

4 1 1 1 2

This freehold and freestanding, primarily brick and cedar home is a wonderfully affordable gem in EGGS and MAGS zones, tucked away in the peaceful Paddington Green cul-de-sac.

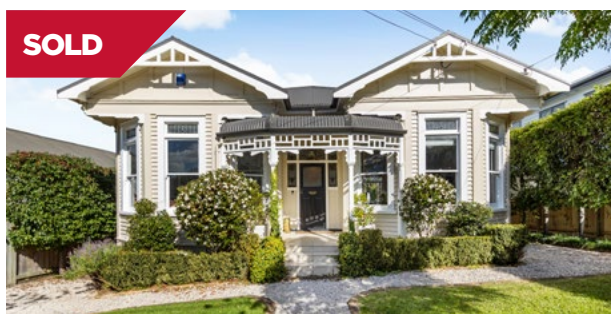


**SOLD**

**Mount Eden/Auckland** 21 Poronui Street

3 1 1 1 2 506<sub>sqm</sub>

Enviably positioned in the heart of Mt Eden Village, oozing originality and charm, this 1910 weatherboard villa is a rare opportunity to secure entry into this prized location.



**SOLD**

**Mount Eden/Auckland** 19 Dexter Avenue

4 4 2 1 1 799<sub>sqm</sub>

The character beauty of this ornate, double bay villa will win your heart from the front gate while the stunning contemporary design of the full renovation and extension ensures longevity for your family.



**SOLD**

**Mount Eden/Auckland** 20 Telford Avenue

4 1 2 1 2 991<sub>sqm</sub>

A beautiful blend of modern comfort in a classic setting, the bungalow character and charm of this family home has been thoughtfully enhanced by an extensive renovation.