

Track record

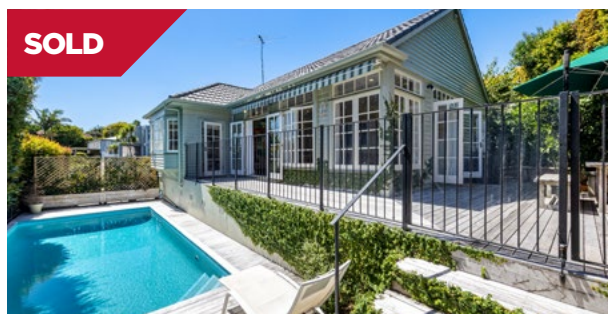


SOLD

Remuera/Auckland 34D Arney Crescent

6 3 3 1 3

Designed by award winning architect Alistair Madill, this stunning, six bedroom, three bathroom residence is situated in a prime elevated position on sought after Arney Crescent.



SOLD

Orakei/Auckland 89B Reihana Street

3 2 2 2

Positioned on an elevated site, this charming, weatherboard, 1930s home has been thoughtfully developed and modernised over time and enjoys abundant sunlight enhanced by high stud ceilings.



SOLD

Glendowie/Auckland 51A Sierra Street

3 1 2 1 2 375sqm

This beautifully designed weatherboard home by Alan Shanahan offers an elevated northern aspect, ensuring it captures sunshine throughout the day.



SOLD

Kohimarama/Auckland 12 Siota Crescent

4 3 3 2 5 1793sqm

This spectacular, rarely available dress-circle, Bays opportunity features close-up, 180 degree, harbour and Rangitoto views and embraces an outstanding elevated northern aspects.

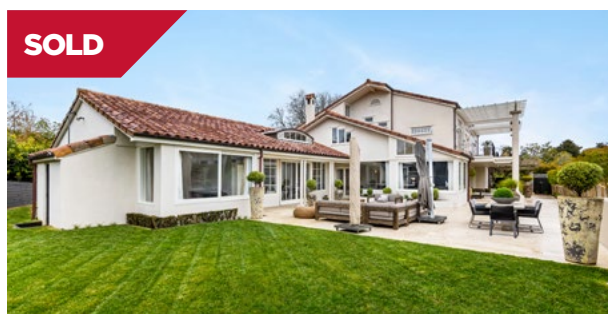


SOLD

Remuera/Auckland 41B Lucerne Road

4 1 3 2 1

This stunning, upbeat, contemporary residence was rebuilt in 2016. Exceptional features include a spacious open plan kitchen at the heart of the home. This space connects seamlessly to a louvre-covered deck with spa.



SOLD

Saint Heliers/Auckland 30 Dingle Road

6 5 4 3 6 1945sqm

This substantial home has been renovated to an extremely high standard. It offers versatile living options that cater to families of all sizes and includes potential for working from home or housing extended family.

*These properties were sold by Jo Johnstone while working for UP Real Estate.

Track record



SOLD

Kohimarama/Auckland 1C Godfrey Place

3 1 1 1 1

This elevated brick and tile home offers real opportunity in this sought-after location. North-facing for plenty of sun, the large deck is perfect for simply relaxing in peace or an outdoor barbecue.



SOLD

Meadowbank/Auckland 2/146 St Johns Road

1 1 1 1

Those with an eye for what could be will see the potential for a makeover of this sunny, 1970s, one bedroom plus flexi-room unit and the benefits of the bright courtyard and garden area at the back.



SOLD

Te Arai/Rodney 267 School Road

5 3 4 4 6 2.3hectare

Just minutes to Te Arai Links Golf Resort, this exclusive retreat is set on over two hectares of north facing, rolling, semi-bush clad land. This is a brilliant cedar home with the most wonderful warm aspect with ocean views.



SOLD

Saint Heliers/Auckland 26 Glen Atkinson Street

5 3 3 2 825sqm

Built with the construction precision of the 50s, this four bedroom family home provides spaces for all seasons and every occasion.



SOLD

Remuera/Auckland 3 Upland Road

3 2 3 2 1

This impeccably maintained 90s home, set back off the road with a meticulously kept garden, is a very peaceful retreat. The floorplan enjoys wonderful natural light and sunshine and provides versatile living options.



SOLD

Saint Heliers/Auckland 1/10 Yattendon Road

2 1 1 1 2

This elevated, light-filled, corner unit, features a beautifully modernised interior and an exclusive use, fully fenced yard. The tastefully landscaped rear garden features an outdoor BBQ area and a child's play zone.

*These properties were sold by Jo Johnstone while working for UP Real Estate.